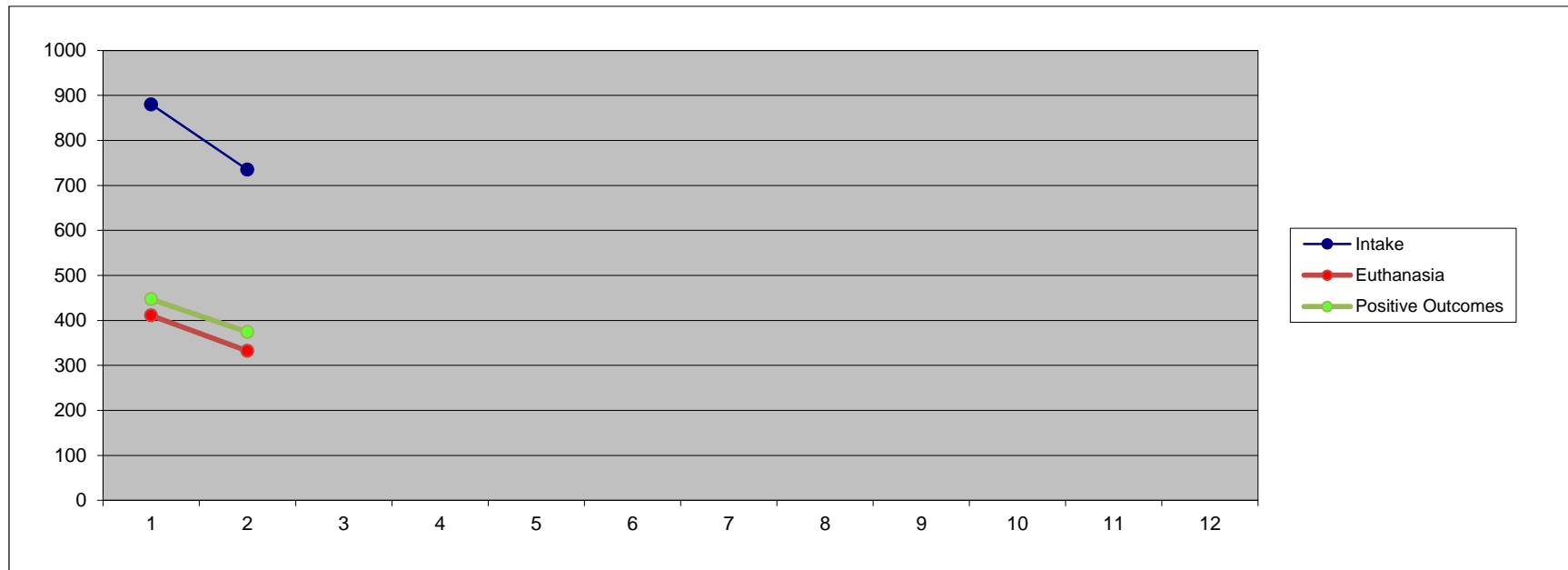


MEMPHIS ANIMAL SERVICES - KENNEL STATISTICS (2014)

2014

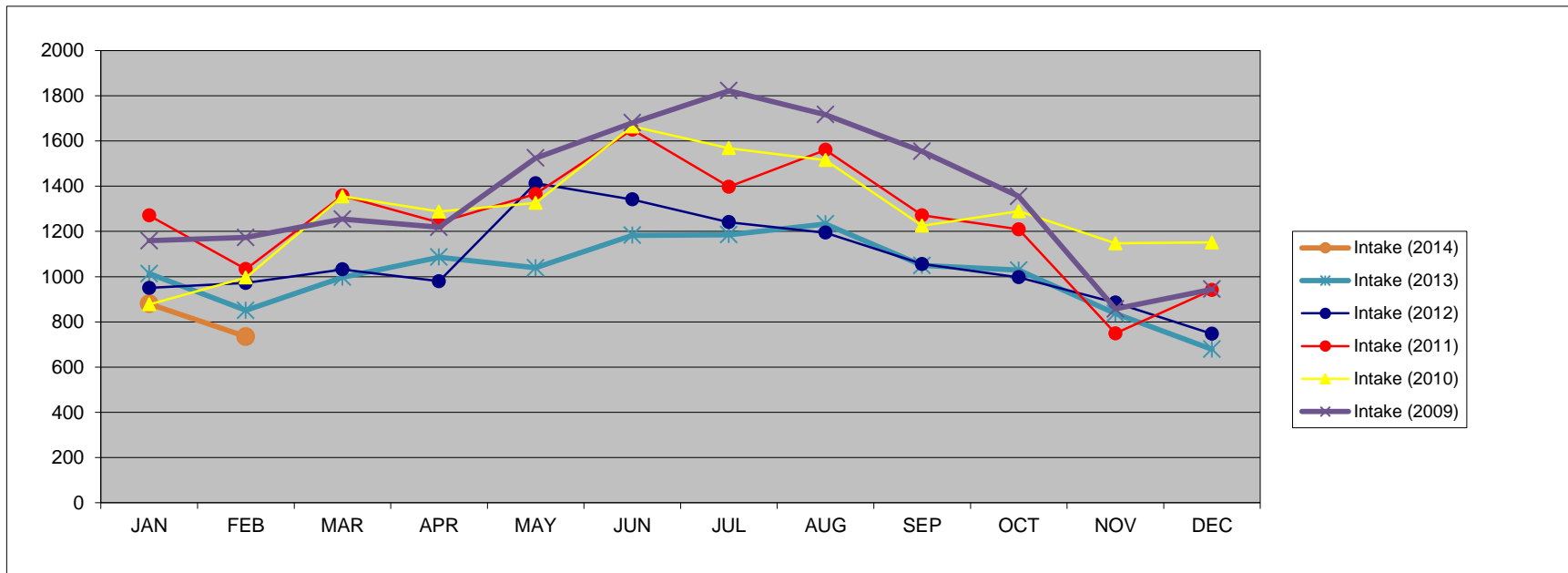
	JAN	FEB	MAR	APR	MAY	JUN	JUL	AUG	SEP	OCT	NOV	DEC	TOTAL
Intake	880	735											1615
Euthanasia	411	332											743
Live Release Rate	447	374											821
Adoption	310	239											549
RTO	48	35											83
Transfer	89	100											189



Live Release Rate: Adoptions, RTO (return to owners) and Transfers

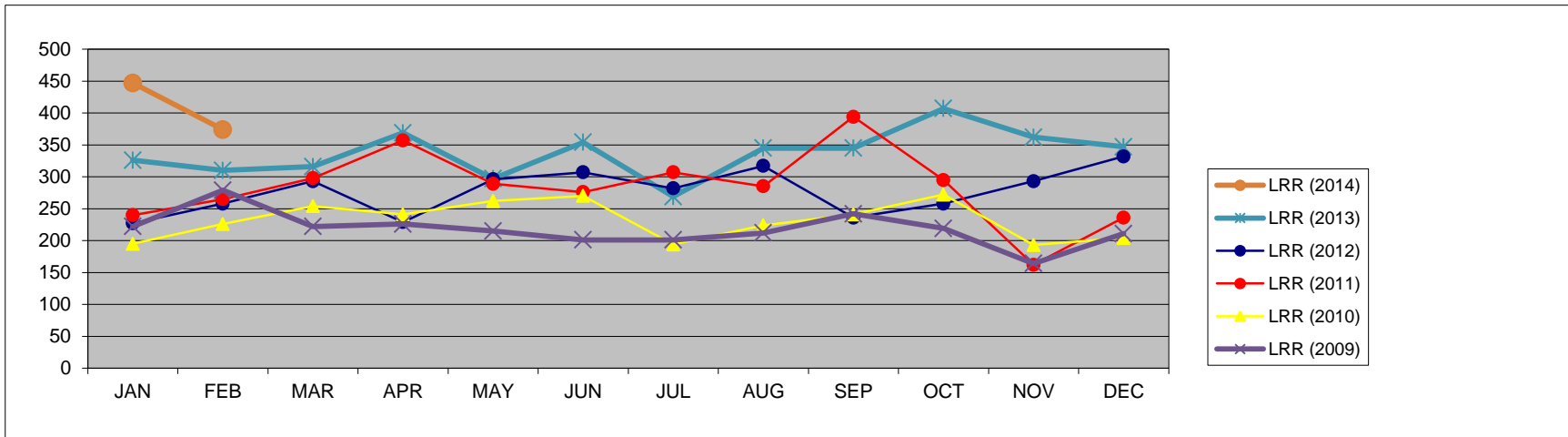
MEMPHIS ANIMAL SERVICES - INTAKE (2009-2014)

	JAN	FEB	MAR	APR	MAY	JUN	JUL	AUG	SEP	OCT	NOV	DEC	TOTAL
Intake (2014)	880	735											1615
Intake (2013)	1013	851	997	1086	1039	1183	1185	1233	1049	1029	837	679	12181
Intake (2012)	950	972	1032	980	1413	1341	1241	1194	1056	997	885	747	12808
Intake (2011)	1270	1033	1358	1239	1365	1650	1397	1560	1271	1209	749	941	15042
Intake (2010)	877	996	1355	1288	1326	1664	1568	1515	1225	1289	1147	1151	15401
Intake (2009)	1159	1173	1254	1218	1524	1680	1822	1716	1554	1355	857	944	16256



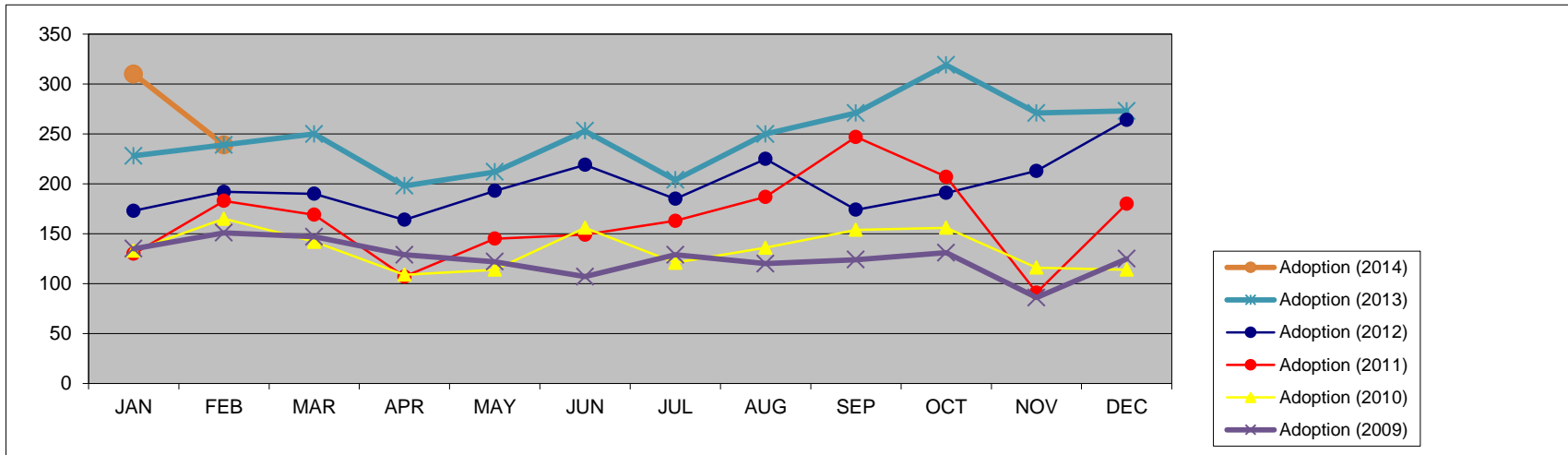
MEMPHIS ANIMAL SERVICES - Live Release Rate (2009-2014)

	JAN	FEB	MAR	APR	MAY	JUN	JUL	AUG	SEP	OCT	NOV	DEC	TOTAL
LRR (2014)	447	374											821
LRR (2013)	326	310	316	369	297	354	269	345	345	407	362	347	4047
LRR (2012)	227	258	293	229	296	307	282	317	236	258	293	332	3328
LRR (2011)	240	265	298	357	289	276	307	285	394	295	162	236	3404
LRR (2010)	195	226	254	241	262	270	194	224	241	272	193	204	2776
LRR (2009)	222	279	222	226	215	201	201	212	242	219	164	211	2614



MEMPHIS ANIMAL SERVICES - ADOPTIONS (2009-2014)

	JAN	FEB	MAR	APR	MAY	JUN	JUL	AUG	SEP	OCT	NOV	DEC	TOTAL
Adoption (2014)	310	239											549
Adoption (2013)	228	239	250	198	212	253	204	250	271	319	271	273	2968
Adoption (2012)	173	192	190	164	193	219	185	225	174	191	213	264	2383
Adoption (2011)	130	183	169	107	145	149	163	187	247	207	91	180	1958
Adoption (2010)	133	165	142	109	114	156	121	136	154	156	116	114	1616
Adoption (2009)	135	151	147	129	122	107	129	120	124	131	86	125	1506



MEMPHIS ANIMAL SERVICES - EUTHANASIA (2009-2014)

	JAN	FEB	MAR	APR	MAY	JUN	JUL	AUG	SEP	OCT	NOV	DEC	TOTAL
Euthanasia (2014)	411	332											743
Euthanasia (2013)	629	581	594	662	715	744	846	869	666	656	446	284	7692
Euthanasia (2012)	658	669	633	568	959	1123	905	886	754	729	533	442	8859
Euthanasia (2011)	1000	756	1167	699	933	1362	985	1244	850	765	567	702	11030
Euthanasia (2010)	562	654	1082	1005	992	1277	1323	1179	854	962	865	907	11662
Euthanasia (2009)	1005	874	932	997	1225	1457	1476	1369	1398	1107	646	769	13255

