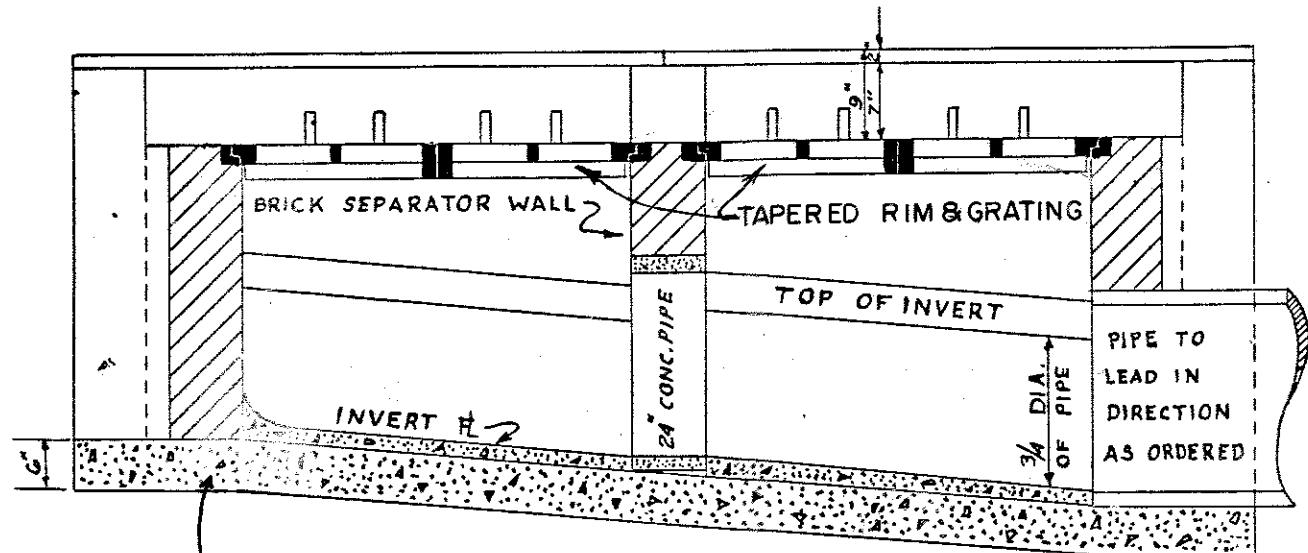
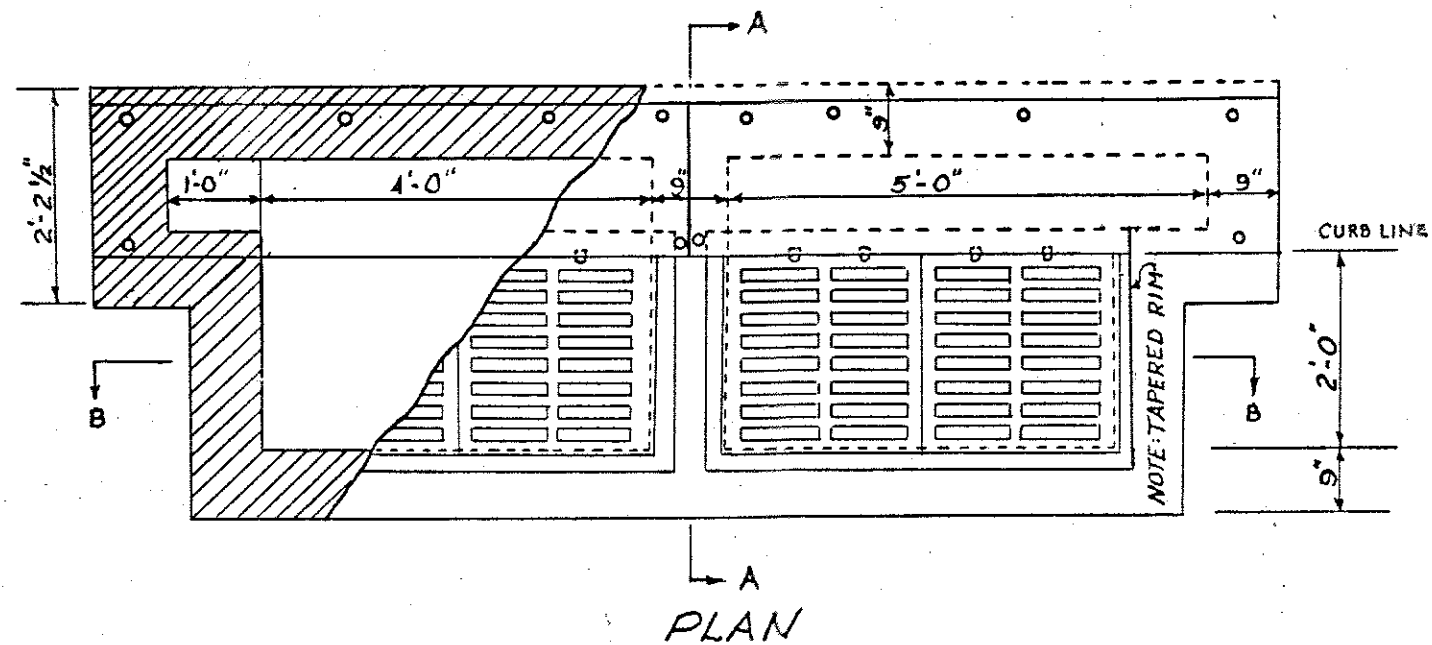


BUREAU, BUREAU ENGINEER, DRAFTSMAN, DATE, SCALE

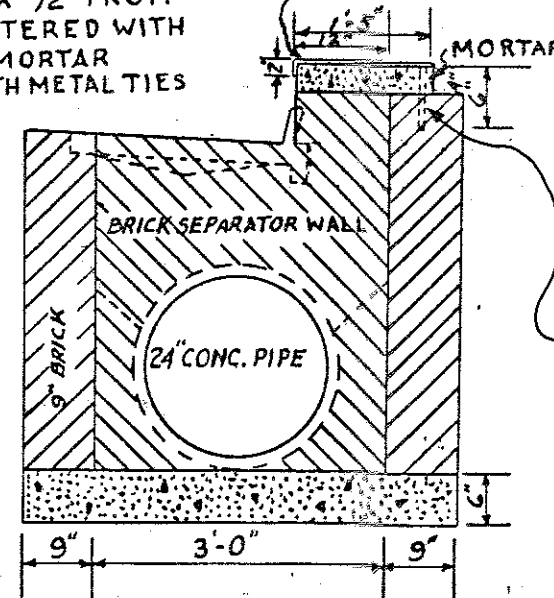


SECTION "B" "B"

CONCRETE TO BE CLASS 'A'

2 EA. 3/8" X 19" X MAX. 6'1" STEEL PLATE
NON-SKID DIAMOND DESIGN SURFACE

BRICK TO BE SET BACK 1/2" FROM
FACE OF CURB & PLASTERED WITH
1/2" COAT OF CEMENT MORTAR
ANCHORED TO WALL WITH METAL TIES



SECTION "A" "A"

REVISIONS			
NO.	DATE	BY	REMARKS
1	5-30-85	L.R.H.	REMOVED DIV. OF PUBLIC WORKS (T. BLK.)
2	7-24-87	D.H.G.	ADD: # 4; CLASS 'A'
3	2-10-88	D.H.G.	REMOVED DEPARTMENT (T. BLK.)

CONVERSIONS	
ENGLISH	METRIC

12 EA. # 4 X 10 1/2" LONG WEDGED
TO PLATE & ANCHORED IN
MORTAR WITH STD. HOOK

DEPT. OF PUBLIC WORKS
STANDARD
TWIN 6-72 INLET
MEMPHIS, TENN.
DRAWN: B.L. RUTH DATE: 5-8-62 SCALE: 1/2" = 1'
J. E. Maxam
CITY ENGINEER
OFFICE ENGINEER

CITY OF MEMPHIS
DIVISION OF ENGINEERING
DESIGN STANDARD
FOR
TWIN 6-72 INLET

CITY ENGINEER _____ DATE _____