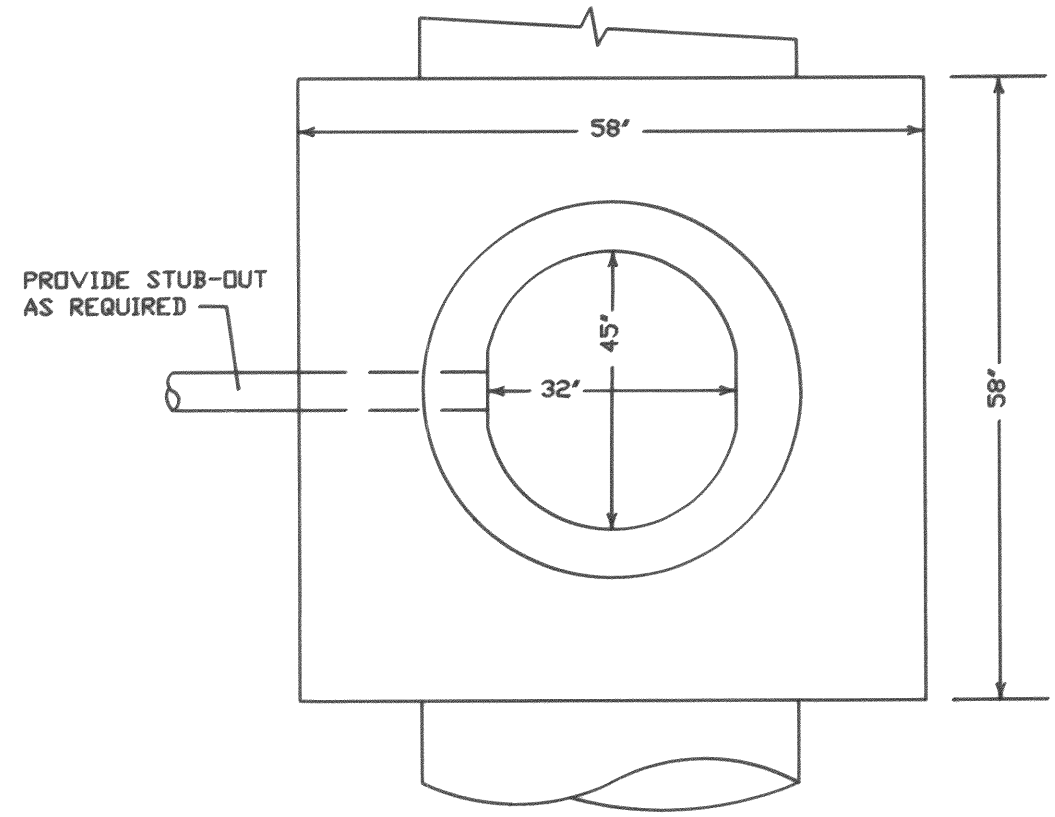
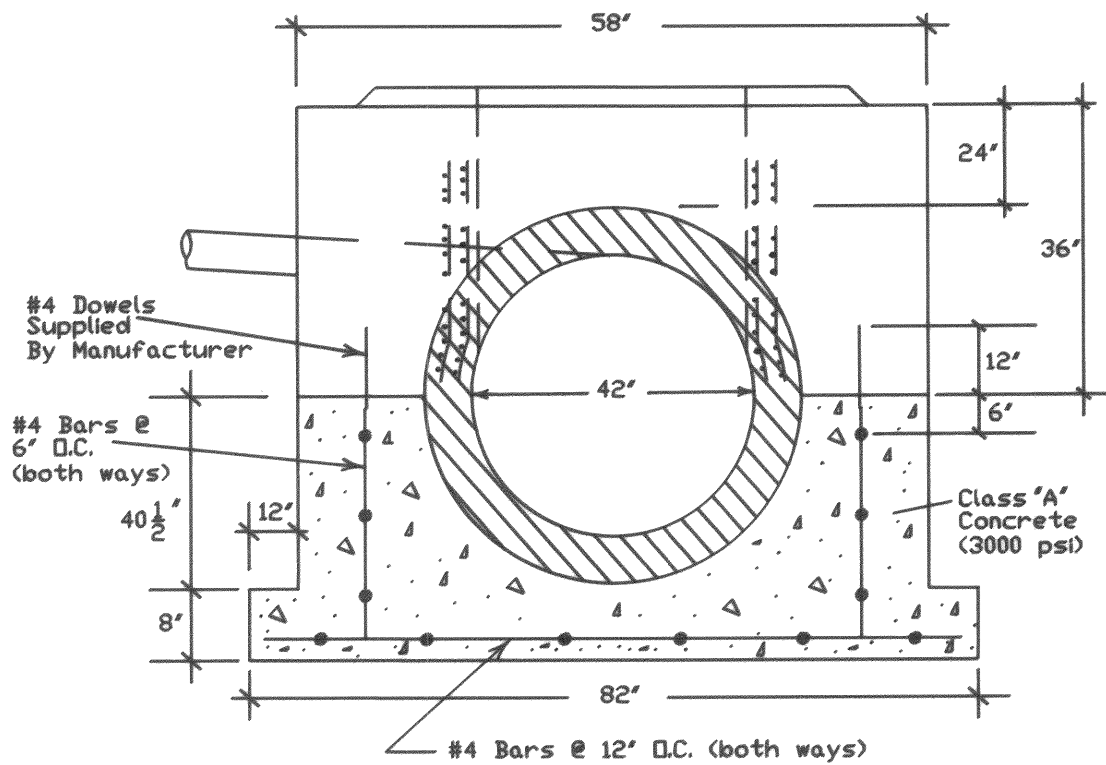


REVISIONS

NO.	DATE	BY	REMARKS

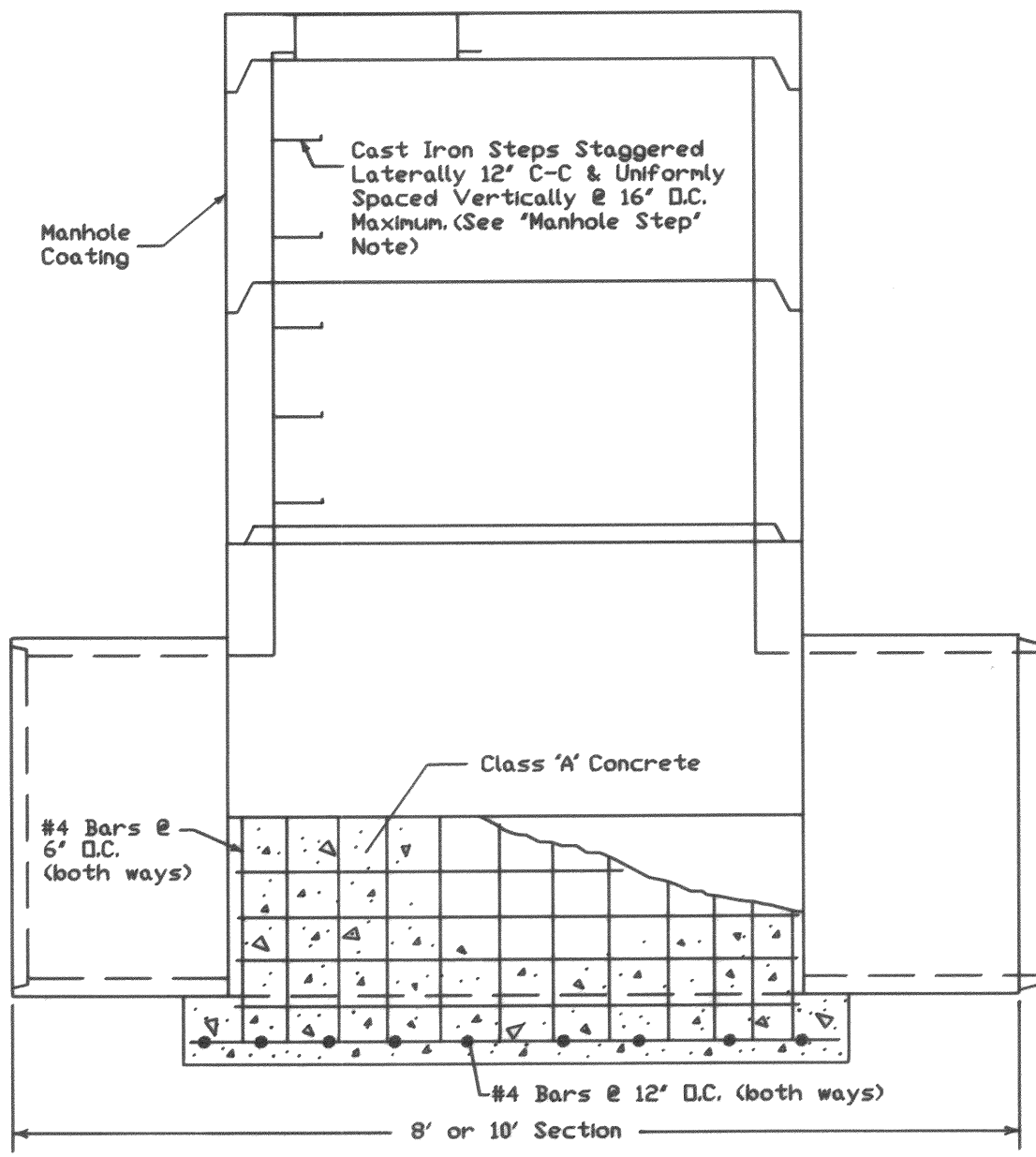


TOP



END

SIDE



42" x 48" TEE MANHOLE AS MANUFACTURED BY QUALITY CONCRETE COMPANY, OR APPROVED EQUAL IS FOR NON - ANGLE SEWER MANHOLES ONLY.

REINFORCEMENT: STANDARD CIII STEEL USED IN STUB, STEEL IN STUB AND BASE PIPE SHALL BE BENT TOGETHER AND WELDED, CONFORMING TO ASTM C76(13).

JOINT SEALANT: CONCRETE MORTAR SHALL BE USED TO SEAL JOINTS AFTER THE INSTALLATION OF AN APPROVED GASKET MATERIAL BETWEEN ALL PRECAST MANHOLE SECTIONS.

MANHOLE COATING: CONTRACTOR TO APPLY ASPHALTIC BLACK TO EXTERIOR OF MANHOLE AS PER SPECIFICATIONS.

MANHOLE STEPS: THE FOLLOWING MANHOLE STEPS HAVE BEEN APPROVED FOR USE:
 1. TOWER GROVE MH STEP NO. B-1096 BY TOWER GROVE FOUNDRY CO.
 2. M.A. MH STEP BY M.A. INDUSTRIES, INC., EAST POINT, GA.
 3. WEDGE-LOK SAFETY STEP BY DELTA PIPE PRODUCTS, INC., ATLANTA, GA.

NOT TO SCALE

CITY OF MEMPHIS
 DIVISION OF ENGINEERING
DESIGN STANDARD
 FOR
 42" x 48" TEE MANHOLE

Charles R. Truax 2/5/90
 CHIEF SEWER DESIGN ENGINEER DATE

Bryant Bondurant P.E. 2-5-90
 CITY ENGINEER DATE