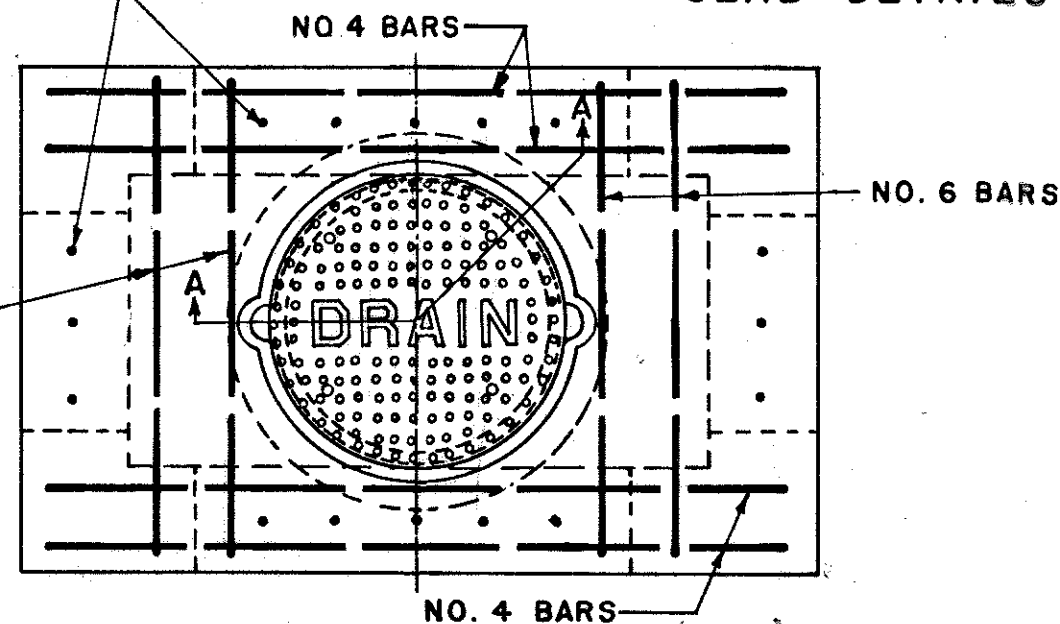
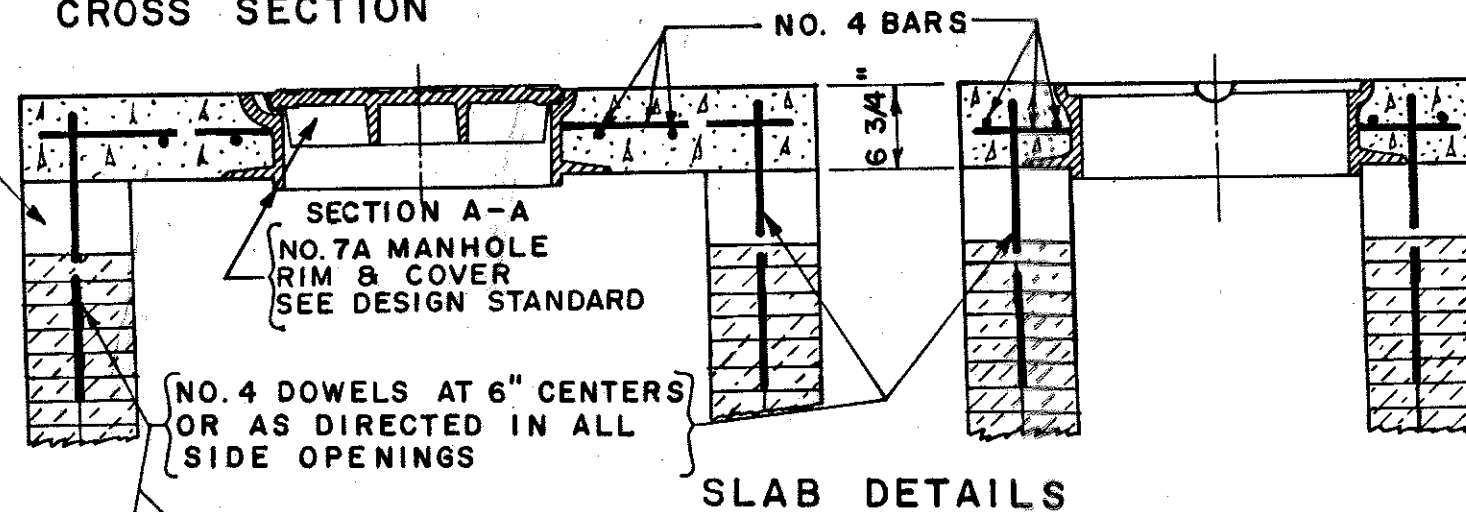
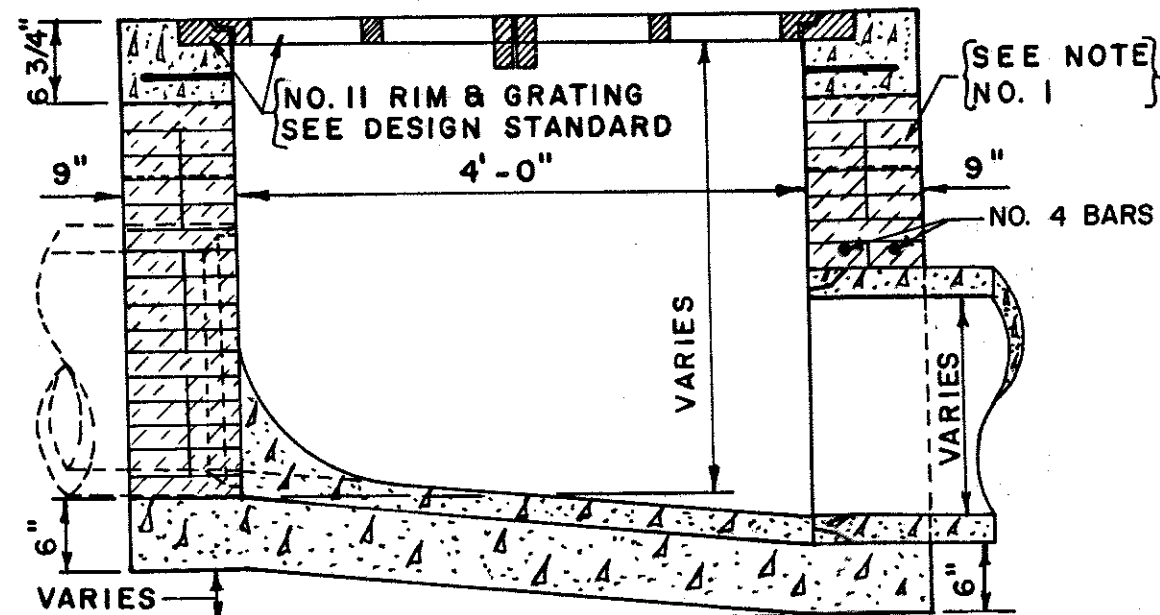
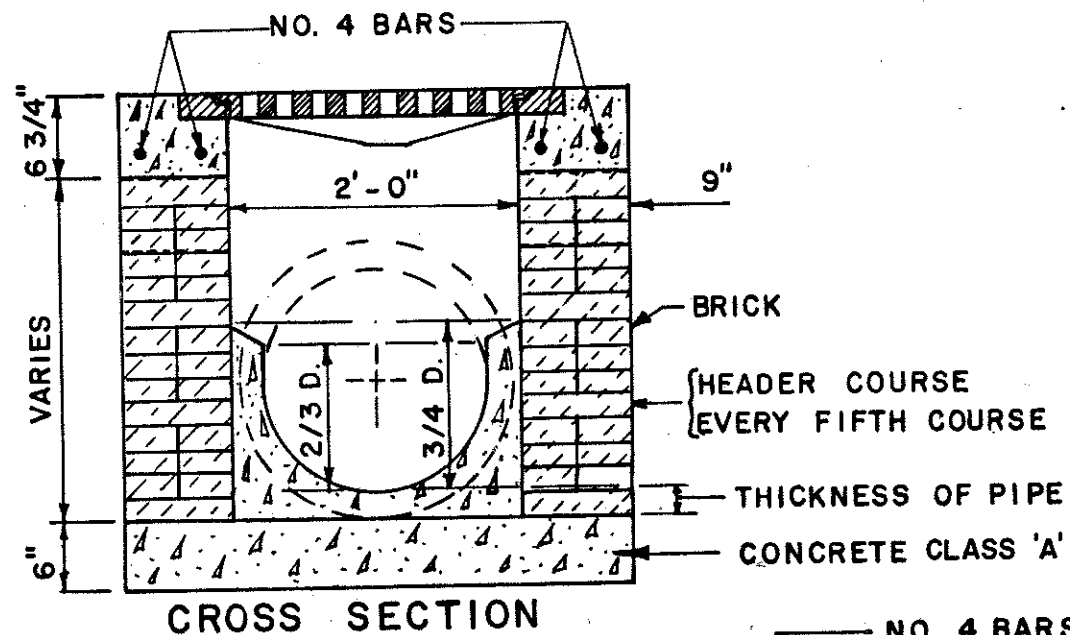
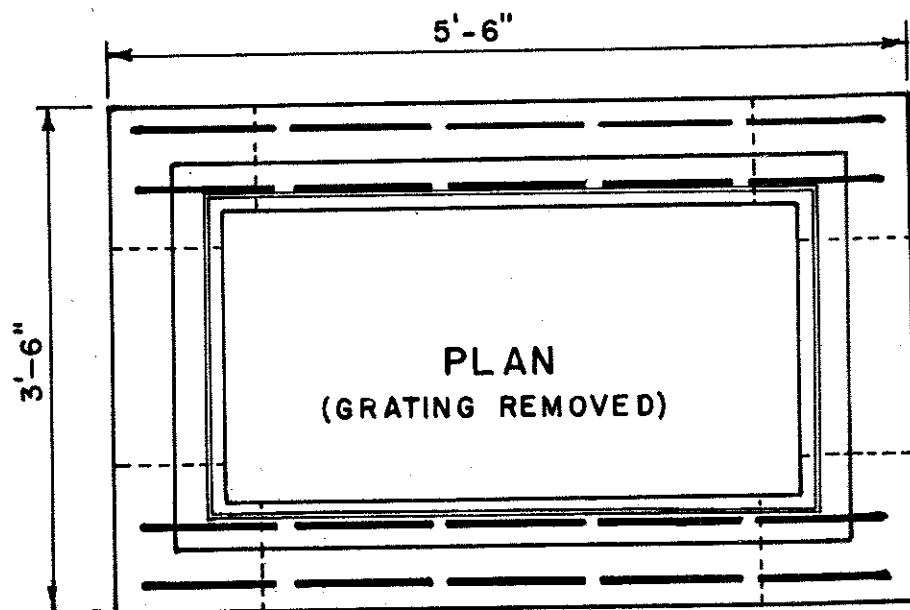


BUREAU ENGINEER, DRAFTSMAN, J.L.H. DATE 2/87 SCALE



REVISIONS			
NO.	DATE	BY	REMARKS
1	5-30-85	L.R.H.	REMOVED DIV. OF PUB. WORKS (T. BLK.)
2	2-5-86	J.F.C.	No. 7A RIM & COVER CHANGED FROM No. 6, CONC., RE-BARS CHANGED OR ADDED.
3	7-17-87	D.H.G.	ADD: NO. 4 BARS; CLASS 'A'
4	2-9-88	D.H.G.	REMOVE DEPARTMENT (T. BLK.)

- NOTES:
1. SIDE OPENINGS TO BE OPTIONAL OR AS DIRECTED
  2. SLAB OR GRATING TO BE OPTIONAL AS DIRECTED
  3. "S" IS AN ABBREVIATION FOR "SPECIAL" (JMB. 5-84)

CITY OF MEMPHIS  
DIVISION OF ENGINEERING

**DESIGN STANDARD  
FOR  
S-II INLET**

---

CITY ENGINEER
DATE