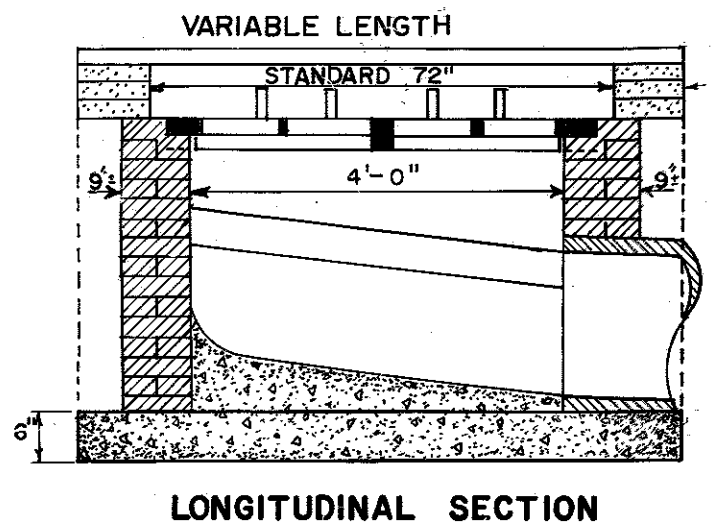
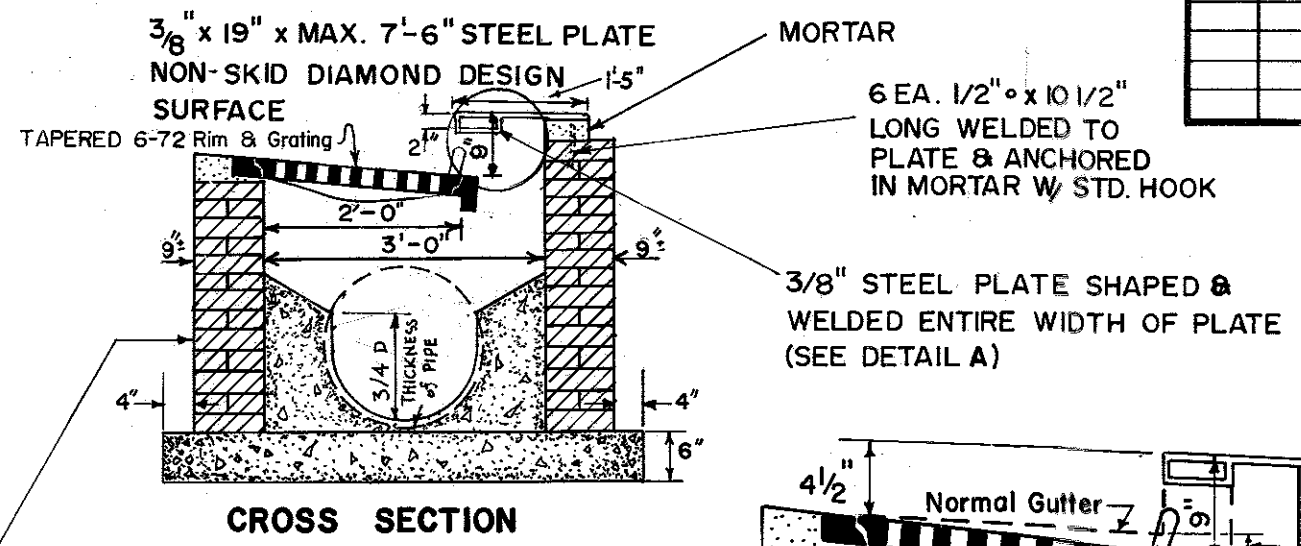


BUREAU, J.G. JAMES JR. BUREAU ENGINEER, F. READ DRAFTSMAN, d.b. DATE 7-5-77 SCALE N/T/S

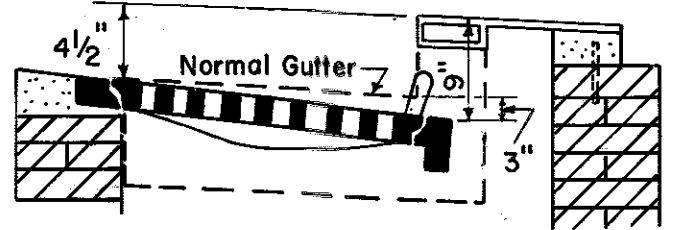


LONGITUDINAL SECTION

BRICK TO BE SETBACK 1/2" FROM FACE OF CURB AND PLASTERED WITH 1/2" COAT OF CEMENT MORTAR



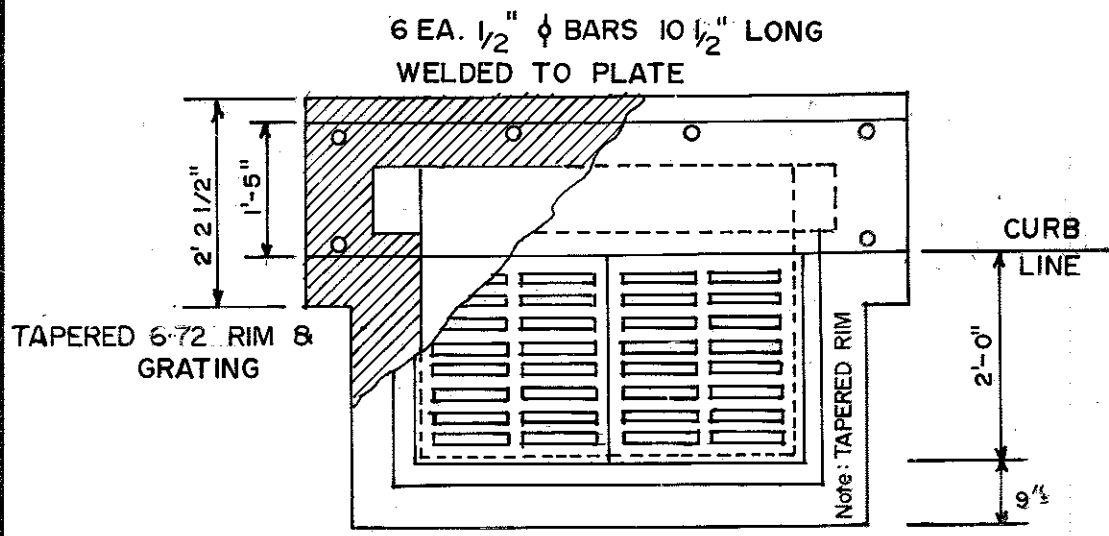
CROSS SECTION



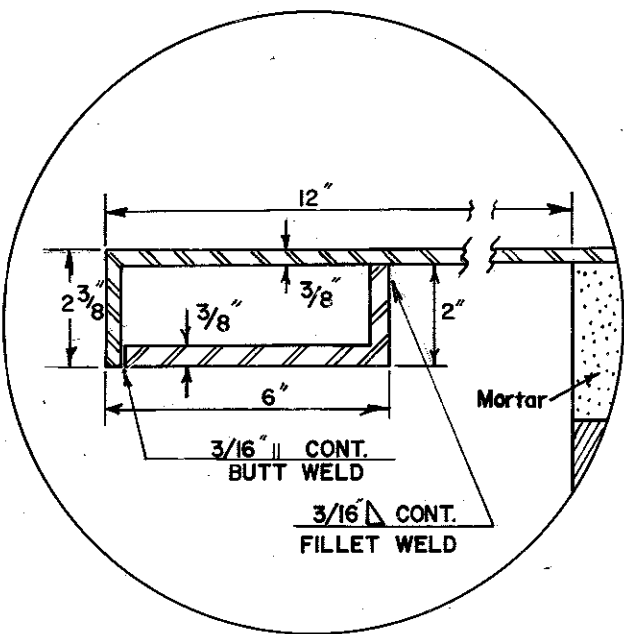
DETAIL B

REVISIONS			
NO.	DATE	BY	REMARKS
1	5/11/79	EW.F.	STD. CONST PRACTICES
2	5-7-85	L.R.H.	REMOVED DIV. OF PUBLIC WORKS (T. BLK.)
3	7-16-87	D.H.G.	ADD: CLASS 'A'
4	2-9-88	D.H.G.	REMOVE DEPARTMENT (T. BLK.)
5	9-88	D.H.G.	ADD: DETAIL B <i>RC 9-12-88</i>

CONVERSIONS	
ENGLISH	METRIC



PLAN



DETAIL A

OPENING AREA OF INLETS		
LENGTH OF CURB OPENING	AREA OF CURB OPENING	TOTAL OPENING AREA OF INLET
48"	2.33 SQ. FT.	6.12 SQ. FT.
54"	2.62 " "	6.41 " "
60"	2.91 " "	6.70 " "
66"	3.20 " "	6.99 " "
72"	3.50 " "	7.29 " "

OPENING AREA OF #12 GRATING 3.79 SQ. FT.  
NOTE: STANDARD CURB OPENING IS 72" VARIATIONS ONLY ON ORDER OF ENGINEER  
Conc. to be CLASS 'A'

CITY OF MEMPHIS  
DIVISION OF ENGINEERING

**DESIGN STANDARD  
FOR  
6-72 INLET**

<i>Ray Mason</i> PRINCIPAL CIVIL ENGINEER	7-5-79 DATE
<i>J.G. James Jr.</i> DEPUTY DIRECTOR/CIVIL ENGINEER	7-10-79 DATE

JC5756