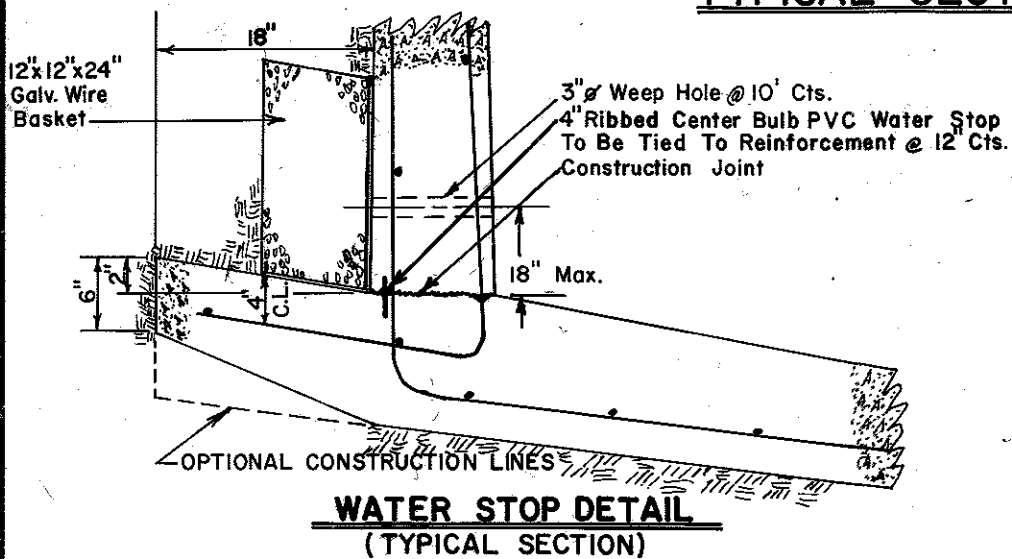
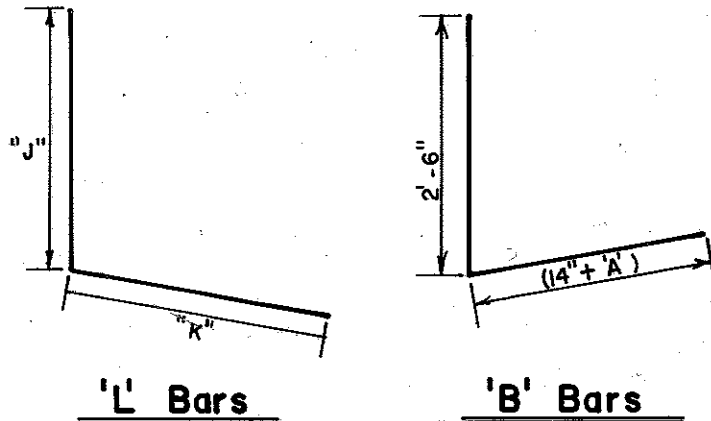


TYPICAL SECTION



WATER STOP DETAIL
(TYPICAL SECTION)



LEGEND

When 'H' Equals	'A'	'B'	'L' Bar	'L' Bar Dimensions				'Y'	
				'J'	'K'	Alt. With	'J'		'K'
7'-1" to 8'	8"	9"	#5 φ @ 7 1/2" Cts.	'H' + 4"	'H' + 4"	Alt. With	4'-0"	4'-0"	1 1/2"
8'-1" to 9'	8"	9"	#5 φ @ 5 1/2" Cts.	'H' + 4"	'H' + 4"	Alt. With	4'-3"	4'-3"	1 1/2"
9'-1" to 10'	9"	10"	#6 φ @ 6 1/2" Cts.	'H' + 5"	'H' + 5"	Alt. With	5'-3"	5'-3"	2"
10'-1" to 11'	10"	11"	#6 φ @ 6" Cts.	'H' + 6"	'H' + 6"	Alt. With	5'-10"	5'-10"	2"
11'-1" to 12'	11"	13"	#6 φ @ 5 1/2" Cts.	'H' + 8"	'H' + 8"	Alt. With	6'-6"	6'-6"	2"

NOTES

- DESIGN SPECIFICATION: ACI-318-83
- CONCRETE: Shall have a minimum 28 day strength of 4000 psi. Air entrainment shall be 6 1/2 percent. Maximum slump at time of placement shall be 4 inches. Concrete shall not contain less than 6.2 bgs. of cement per yard.
- REINFORCING STEEL: To be ASTM A615 grade 60. Bending dimensions are out to out. Tolerances for placing reinforcement, in the direction of the thickness of the member, shall be ± 1/2 inches.
- HORIZONTAL CONSTRUCTION JOINT: On footings shall be clean free of laitance and intentionally roughened to a full amplitude of approximately 1/4 inch. Construction joints shall be allowed only where shown on plans.
- TRANSVERSE EXPANSION JOINTS: To be placed at 30 foot spacings. Use 3/4" thick asphalt impregnated fiberboard. No dowels or key required.
- FILTER CLOTH: Shall be pervious sheets of strong rot-proof plastic fabric meeting the following specifications:
Burst Strength = 125 lb (minimum)
Grab Tensile = 90 lb (minimum)
Equivalent Opening Size = .0117 in (maximum), .0059 in (minimum)
- SURCHARGE HEIGHT: Maximum surcharge height (distance from top of wall to top of slope) shall be 5 feet when using a 2:1 slope. For surcharge heights greater than 5 feet use 3:1 slope.
- BACKFILL COMPACTION: May be obtained by jetting or flooding if the contractor feels proper compaction can be obtained by these methods. At time of acceptance of the work by the engineer the toe of the slope shall be at least 3" above top of wall.
- WIRE BASKETS: Shall be filled with a clean well graded gravel, and firmly attached to the wall prior to the backfilling operation as directed.

$$\text{ORDER OF STANDARD DIMENSIONS} = \frac{\text{HEIGHT OF WALL}}{\text{INVERT DEPTH}} \times \text{WIDTH}$$

CITY OF MEMPHIS

DESIGN STANDARD
FOR

Concrete Channel Lining
For Wall Height of 7'-1" to 12'-0" With
Wire Basket at Weep Holes

Revised Weep Hole note: GWC 02/89
Revised Conc. note to agree with specs: [Signature] 06/88

[Signature] P.E. 9/18/84
CITY ENGINEER DATE