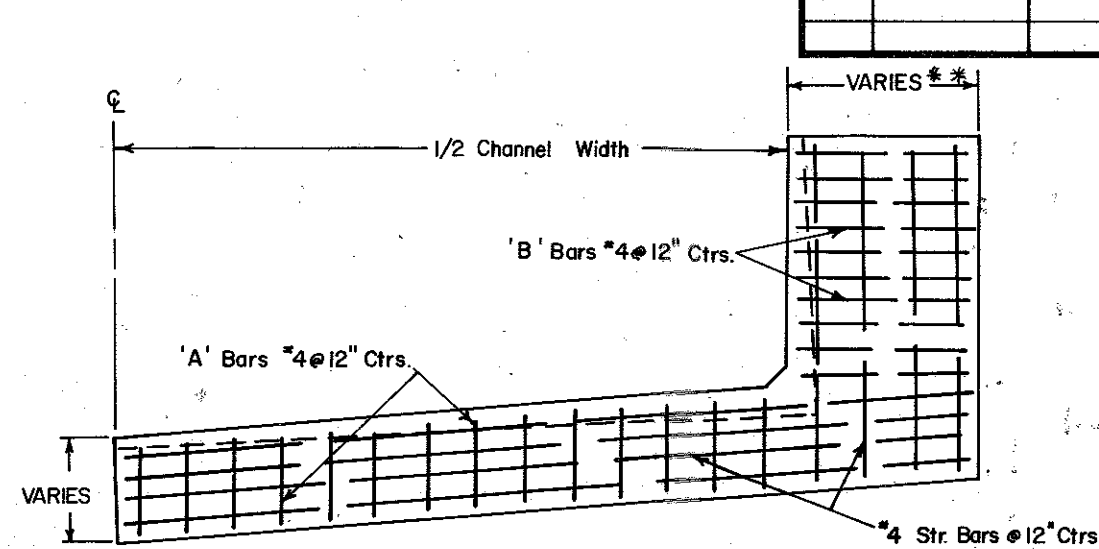
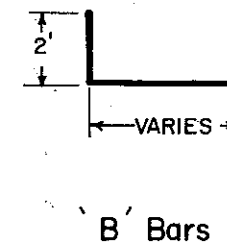
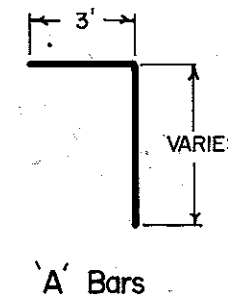
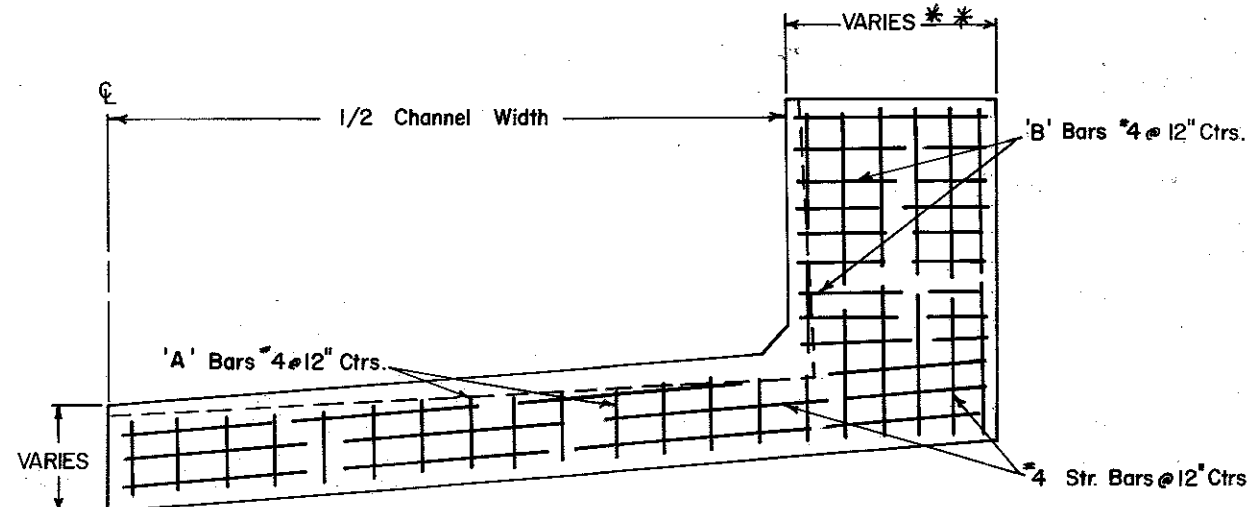
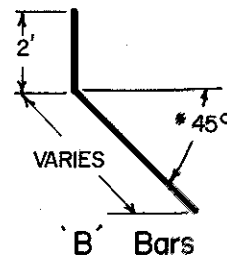
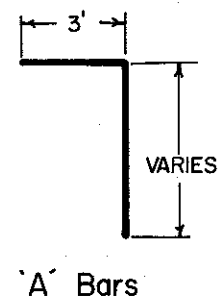
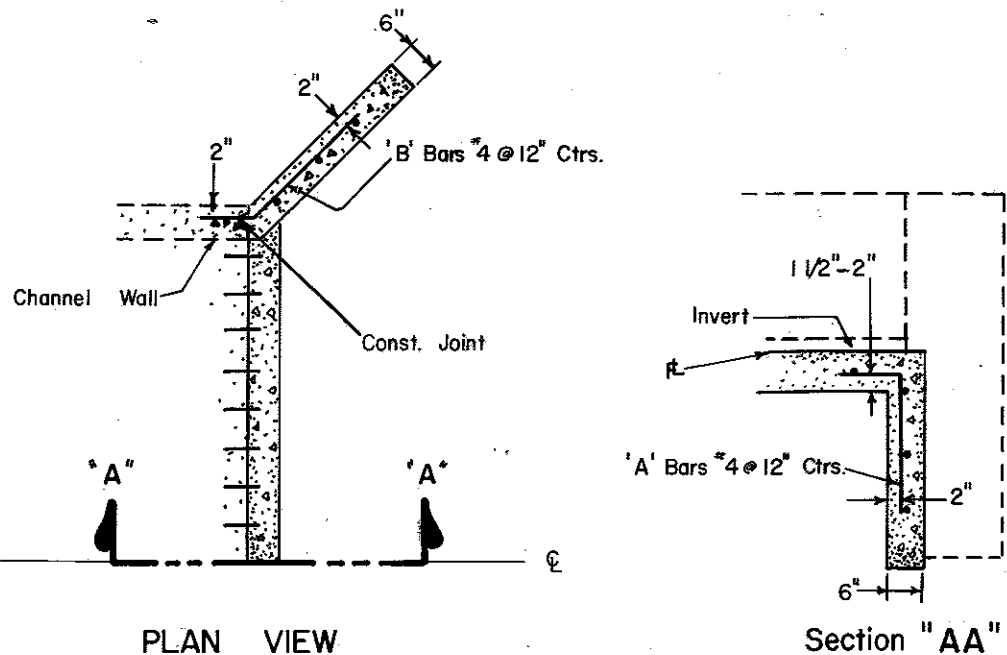


DIVISION OF PUBLIC WORKS BUREAU, BUREAU ENGINEER, DRAFTSMAN, DATE 5-20-83 SCALE N.T.S.

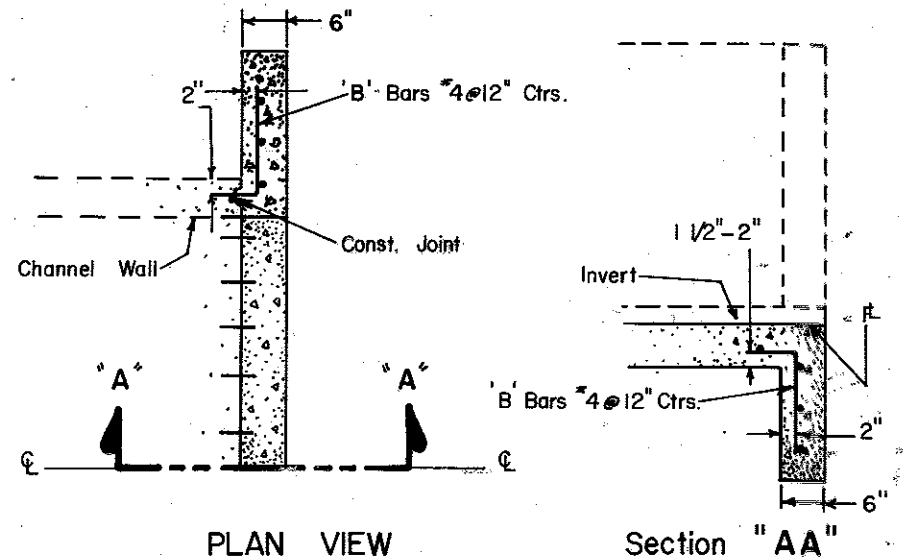


REVISIONS			
NO.	DATE	BY	REMARKS
▲	3/9/94	C.B.W.	CHANGE f'_c FROM 3000 TO 4000. <i>HJA</i>
▲	9/29/95	C.B.W.	REVISED TITLE & ADDED WIDTH & HEIGHT LIMITS. <i>HJA</i>

CONVERSIONS	
ENGLISH	METRIC



45° WINGWALL ▲



90° WINGWALL ▲

- NOTES:**
- Conc. min. 6" Thk.
 - ▲ f'_c 4000 Class "AS"
 - f_y 60,000

 - All variable dimension will appear on the construction plans.

 - ▲ ** 12 FT. MAX. WINGWALL LENGTH.
 - * UNLESS NOTED OTHERWISE ON PLAN.

CITY OF MEMPHIS

DESIGN STANDARD FOR WINGWALL & TOEWALL FOR CONCRETE CHANNEL LINING (WITH WALL HEIGHT LESS THAN 6 FT.)

Martin L. Jacob, PE 9/8/83
 CITY ENGINEER DATE