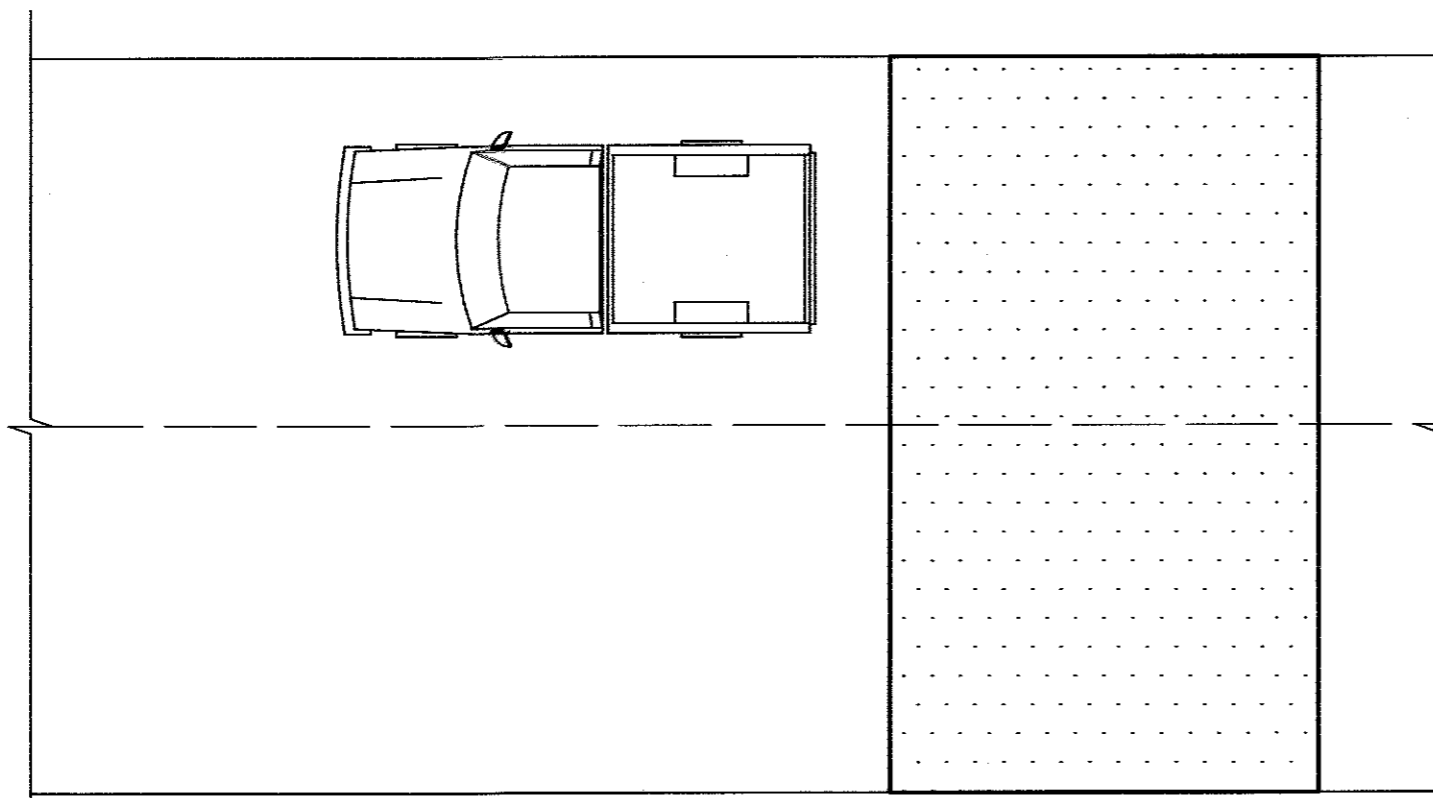


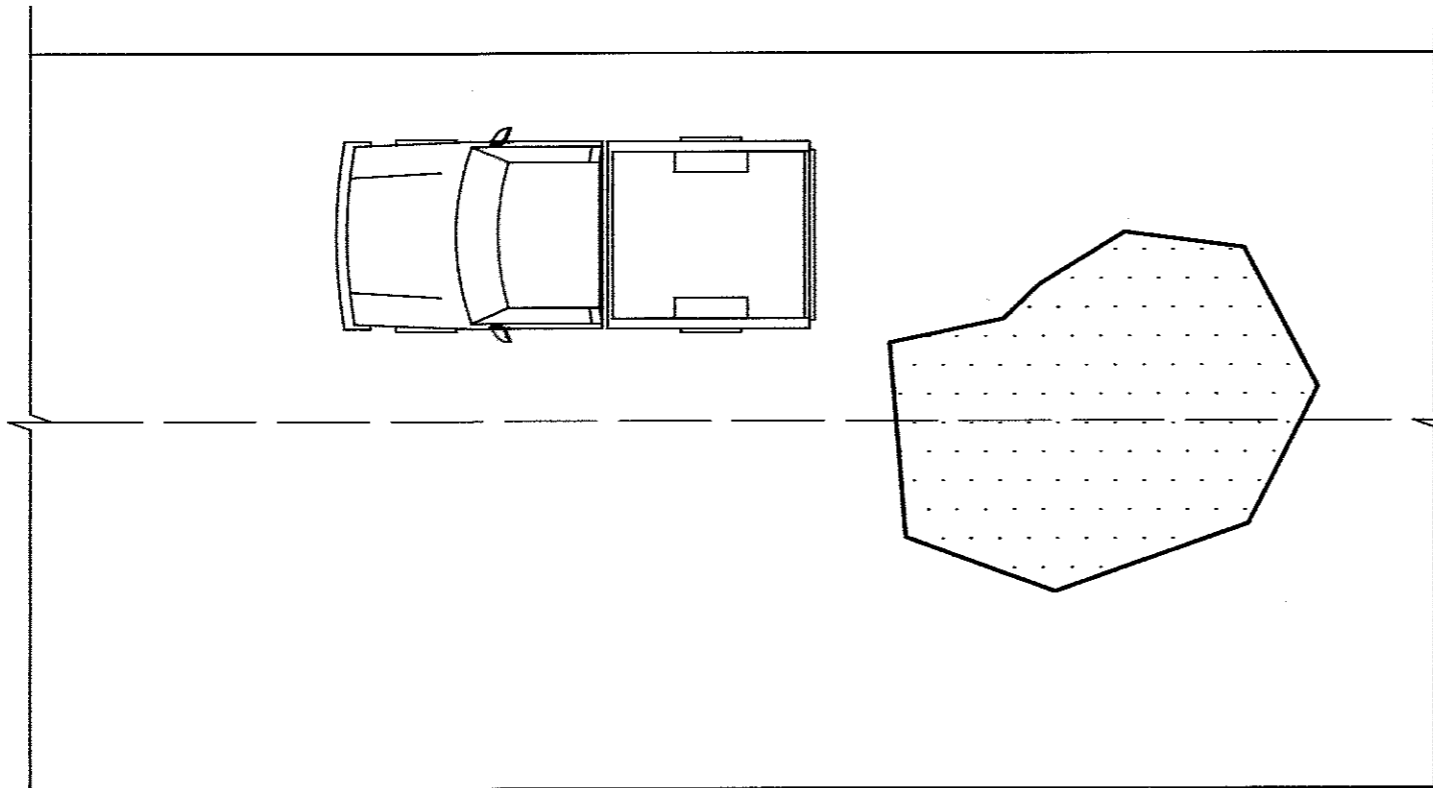
REVISIONS			
NO.	DATE	BY	REMARKS

**NOTES**

1. EXISTING PAVEMENTS SHALL BE REMOVED TO CLEAN, STRAIGHT LINES PARALLEL AND PERPENDICULAR TO THE FLOW OF TRAFFIC.
2. DO NOT CONSTRUCT PATCHES WITH ANGLED SIDES AND/OR IRREGULAR SHAPES.
3. ALL REPAIRS SHALL BE FULL LANE WIDTH.
4. FOR PATCHES IN ASPHALT, A TACK COAT SHALL BE APPLIED TO ALL EDGES OF THE EXISTING ASPHALT BEFORE PLACING THE NEW PAVEMENT.
5. AFTER PLACING THE NEW ASPHALT, ALL SEAMS (JOINTS) BETWEEN THE NEW AND EXISTING PAVEMENTS SHALL BE SEALED WITH AN ASPHALT TACK COAT OR RUBBERIZED CRACK SEAL MATERIAL.



**ACCEPTABLE**



**NOT ACCEPTABLE**

NOT TO SCALE

<b>CITY OF MEMPHIS DIVISION OF ENGINEERING</b>	
<b>DESIGN STANDARD FOR PAVEMENT REPAIR MULTI-LANE DETAILS</b>	
<i>Choo Chew</i> CIVIL DESIGN ENGINEER	12.11.19 DATE
<i>WZ</i> CITY ENGINEER	12/16/19 DATE